



**Southern
Cross
University**



Postgraduate Course Guide 2025

scu.edu.au/postgraduate

Transforming > Tomorrow

CRICOS Provider: 01241G | TEQSA Provider Code: PRV12043 Australian University



Transform your future

When you join Southern Cross University, you'll be studying in a revolutionary academic model that's unique in Australia.

Six-week terms, immersive learning experiences, real-world scenarios; our students thrive and achieve academically in courses built for their success, both at university and beyond. Our postgraduates have some of the highest graduate employment rates in the country and they earn well above the national median postgraduate salary.*

You'll be connected to an alumni network that spans the globe and join a community of like-minded and passionate people who are building a better future for everyone.

Together, we are Transforming Tomorrow.

*Graduate Outcomes Survey 2023, qilt.edu.au



5-star skills development, student support, teaching quality and full-time employment for postgraduate study



TOP 100 Young Universities



Top 600 universities globally

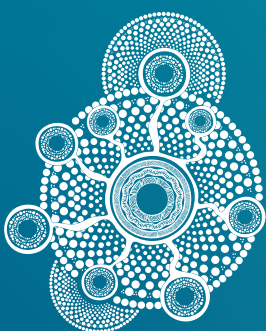


Top 100 for Oceanography
Top 300 for Nursing
Top 400 for Education



Contents

Transform your future	02	Indigenous Australian Student Services (IASS)	15
Our graduates	04	Gold Coast campus	17
Postgraduate courses	05	Northern Rivers campus	18
Funding your studies	08	Coffs Harbour campus	19
Scholarships	08	Study online	20
Supporting your studies	10	Student life	21
Careers and employability team	11		
Student access and inclusion	13		
UniMentor – connecting students	13		
Research degrees	14		



We acknowledge Widjabal Country as the Country where Southern Cross University originated and grew, and from where it continues to grow. It seeded the growth of our Gumbaynggirr Campus in Coffs Harbour, our Yugambeh Campus in Coolangatta and it planted the seeds to transform the Countries we are on.

Understanding our origins will make each step into the future a more purposeful one, leading all to transform tomorrow.

Our graduates



Award-winning early education mentor

Dulari Gonawala
Graduate Diploma of Education (Early Childhood)
Teacher Mentor, GoodStart Early Learning

When Dulari Gonawala arrived in Australia with her husband and young family nine years ago, she had no idea she'd win a national award and become an early education leader.

Dulari has received a prestigious National Excellence in Teaching Award (NEITA) for her role as Educational Leader at GoodStart Early Learning in Berwick, Victoria. She has since been promoted to Teacher Mentor, supporting other up-and-coming early childhood educators.

"Winning a national award is a big deal and especially so when English is my second language. And now being in a role focused on supporting and coaching the rest of the team, this is a dream come true for me," Dulari said.

Career development in the frame

Jack McArthur
Master of Business Administration
Managing Director, Glencoe Group

As Managing Director of Glencoe Group, a manufacturing business producing timber trusses and structural steel, Jack McArthur knows how to frame things well.

University might employ a different kind of framework but the principles of hard work, investigation and putting theory into practice all apply.

"Personal development was the key reason to undertake an MBA for me. Having done extensive research, I found that Southern Cross University provided the best fit in all of those key areas I wanted to study.

"Study takes things to a deeper level. I think you can only learn so much out in the field. Learning more about how things come together will absolutely impact how I grow as a leader in the business."



Putting patients in the driver's seat

Dr Lauren Prictor
Master of Lifestyle Medicine
GP and Certified Lifestyle Medicine Physician

As a General Practitioner, Dr Lauren Prictor is integrating the pillars of lifestyle medicine into her clinical practice.

"As my time in general practice has gone along, I've stepped away from the five-minute scripts, quick checklist and vague advice to longer appointments, tackling the six pillars of lifestyle medicine to put patients in the driver's seat of their health.

"These six pillars - diet, exercise, mood, social connection, sleep and substance use - can all play a factor in the prevention of chronic disease. Having lifestyle medicine as an evidence-based strategy for preventing and managing diseases has set me up with a good arsenal of tools to help people move towards prevention rather than cure."



Postgraduate courses

Courses	Location	Duration	Starts	Professional accreditation
Business				
Graduate Certificate in Business Also available in online accelerated mode	Gold Coast	0.5FT/1PT	March, July, October	
Graduate Certificate in Project Management	Online accelerated	8mths PT	January, March, May, July, September, October	AIPM
Graduate Diploma of Business Also available in online accelerated mode	Gold Coast	1FT/2PT	March, July, October	
Graduate Diploma of Project Management	Online accelerated	16mths PT	January, March, May, July, September, October	AIPM
Master of Business Administration Also available in online accelerated mode	Gold Coast	2FT/4PT	March, October	
Master of Project Management	Online accelerated	2PT	January, March, May, July, September, October	AIPM
Computing and Information Technology				
Master of Computing	Gold Coast, online	2FT/4PT	March, July, October	ACS
Education				
Graduate Certificate in Education	Online accelerated	1 PT	January, March, May, July, September, October	
Graduate Certificate in Education (Early Childhood)	Gold Coast, online	0.5FT/1PT	March, July, October	
Graduate Certificate in Educational Inclusion and Diversity	Online accelerated	8mths PT	January, March, May, July, September, October	
Graduate Certificate in Educational Wellbeing	Online accelerated	8mths PT	January, March, May, July, September, October	
Graduate Diploma in Education (Early Childhood)	Gold Coast, online	1FT/2PT	March, July, October	ACEQA
Master of Education	Online accelerated	2PT	January, March, May, July, September, October	
Master of Teaching	Gold Coast, online	2FT/4PT	March, July, October	NESA, ACECQA
Engineering				
Master of Engineering Management	Online accelerated	16mths PT	January, March, May, July, September, October	
Master of Engineering Management, Master of Business Administration	Gold Coast	2FT/4PT	March, October	

Courses	Location	Duration	Starts	Professional accreditation
Health				
Graduate Certificate in Diabetes Education and Management	Online	8mths PT	March	
Graduate Certificate in Healthcare Leadership	Online accelerated	8mths PT	January, March, May, July, September, October	
Graduate Certificate in Mental Health	Online accelerated	8mths PT	January, March, May, July, September, October	
Graduate Certificate in Mental Health Nursing	Online accelerated	8 mths PT	January, March, May, July, September, October	
Graduate Diploma of Mental Health	Online accelerated	16mths PT	January, March, May, July, September, October	
Graduate Diploma of Mental Health Nursing	Online accelerated	16mths PT	January, March, May, July, September, October	ACMHN
Master of Healthcare Leadership	Online accelerated	2PT	January, March, May, July, September, October	
Master of Mental Health	Online accelerated	2PT	January, March, May, July, September, October	
Master of Mental Health Nursing	Online accelerated	2PT	January, March, May, July, September, October	ACMHN
Master of Nursing	Gold Coast, Northern Rivers, Coffs Harbour	2FT/4PT	January	ANMAC
Master of Osteopathic Medicine	Northern Rivers, Gold Coast	1.5FT/3PT	March	AOAC
Graduate Certificate in Advanced Naturopathic Medicine	Online	34wks PT	July	
Master of Advanced Naturopathic Medicine	Online	1.5PT	July	
Graduate Certificate in Lifestyle Medicine	Online	1PT	March	
Master of Lifestyle Medicine	Online	1FT/2PT	March	ASLM
Master of Integrative Medicine	Online	2PT	March	
Master of Naturopathic Medicine	Gold Coast, Northern Rivers	2FT/4PT	March, July	ANTA, ANPA, ATMS, CMA, ARONAH
Master of Professional Psychology	Online	1FT/2PT	March	APAC
Indigenous Knowledge				
Doctor of Indigenous Philosophies	Northern Rivers, online	3FT/6PT	March	

Courses	Location	Duration	Starts	Professional accreditation
Law				
Graduate Certificate in Business Law	Online accelerated	8mths PT	January, March, May, July, September, October	
Master of Business Law	Online accelerated	16mths PT	January, March, May, July, September, October	
Master of Laws (Business Law)	Online accelerated	16mths PT	January, March, May, July, September, October	
Science and Environment				
Graduate Certificate in Regenerative Agriculture	Online*	1PT	March	
Graduate Diploma of Regenerative Agriculture	Online*	1FT/2PT	March	
Social Work and Community Services				
Master of Social Work (Professional Qualifying)	Gold Coast, online*	2FT/4PT	March, October	AASW
Tourism				
Graduate Certificate of Business in Global Hotel Leadership	The Hotel School Sydney, Melbourne and Brisbane	0.5FT/1PT	March, July, October	
Graduate Diploma of Business in Global Hotel Leadership	The Hotel School Sydney, Melbourne and Brisbane	1FT/2PT	March, July, October	
Master of Business in Global Hotel Leadership	The Hotel School Sydney, Melbourne and Brisbane	2FT/4PT	March, July, October	

* The online study mode includes compulsory on-campus residentials. See webpage for details.



The Hotel School

The Hotel School is a unique partnership between Southern Cross University and Mulpha Australia, a global hotel investment group. With campuses in the centres of Sydney, Melbourne and Brisbane and on Hayman Island, the Hotel School is perfectly located not only for study but also for internships in leading leisure and hospitality businesses.

Southern Cross was the first university in Australia to offer a degree in tourism and is consistently ranked among the world's best tourism and hospitality schools. Visit hotelschool.scu.edu.au



Funding your studies

Most postgraduate degrees are eligible for FEE-HELP. This is a form of government loan that covers the cost of your studies. You pay this loan back through the tax system once your income reaches a certain threshold.

Some postgraduate degrees are also Commonwealth-Supported. This means a portion of your tuition fees is paid by the Commonwealth Government.

Student Services and Amenities Fee

Also known as SSAF, the Student Services and Amenities Fee is used to provide important services and amenities to students both on and off campus. The SSAF is calculated per unit, based on the unit's credit point value. The maximum SSAF fee in 2024 was \$351. Eligible students have the option of deferring this fee through the SA-HELP loan scheme.

Other study costs

Your costs could also include computer equipment and software, stationery, field trips, uniforms or other course-specific expenses such as art materials, musical equipment or travel for practicums, internships or industry experience.

Books and supplies

Some courses will require you to buy textbooks. The cost of textbooks varies greatly from unit-to-unit. Students can consult booktopia.com.au to find textbooks for a given unit. Second-hand textbooks are sometimes available.

For details visit:

studyassist.gov.au



For details visit:

scu.edu.au/fees



Scholarships

One easy application for a range of scholarships

Scholarships really make a difference. They make your education even more attainable by reducing the financial burden of study – enabling you to focus on your studies and put your learning first.

Scholarships for postgraduate students are available for both coursework programs and research.

More details and how to apply:

scu.edu.au/scholarships



Supporting our healthcare leaders

Lieutenant Colonel Kylie Hasse, Master of Healthcare Leadership student and Bonnie Boezeman AO Leadership in Nursing Scholarship recipient.

As a nurse and Senior Health Officer in the Australian Army, Kylie has been awarded a Distinguished Service Medal for outstanding leadership and dedication to duty as a Nursing Officer. “Being a role model for nurses within the defence force and assisting with the growth and development of the profession is something I really value” she said.



Supporting your studies

No student is an island. No matter the extra help you need – we've got you covered.



Careers and
employability service



Equity and inclusion
services



Mentor programs



Academic skills help



Counselling services



Student advocacy



Indigenous student
support



Wifi and tech
services

Careers and employability team

Give your career the head start it deserves and make contact with the Careers and Employability team from the first year of your studies through CareerHub and the online CareerSuccess resources.

The Careers team can help you with:

- Career counselling
- Choosing the right degree
- Finding part-time work on CareerHub
- Assistance with job applications
- Mock interviews
- Networking
- Help with targeting graduate employers.

More details and how to apply at:

scu.edu.au/careers



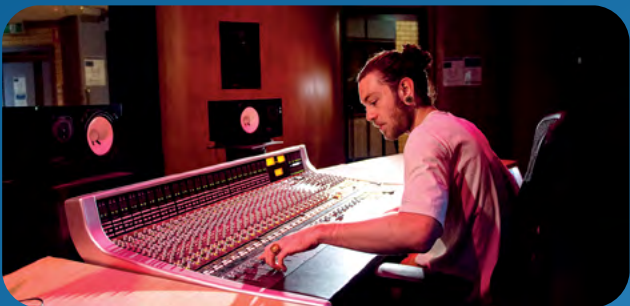
Email: careers@scu.edu.au



Student access and inclusion

If you are a student with disability, we provide a range of support services to assist you to be successful in your studies. These services may include note-taking assistance or digital note-takers, access to alternative format materials, special software or other services as needed.

If you are vision or hearing impaired or have a significant physical disability which requires a high level of support, please contact Student Access and Inclusion as early as possible (at least three-to-four months prior to your intended enrolment).



The Southern Cross Model

A better way to learn at uni

All our courses are taught in the Southern Cross Model, a unique academic calendar of six-week Terms and immersive study experiences. Say goodbye to lectures and hello to assessments that prepare you for the real world. Better grades and more chance of passing with flying colours? Yes, please!

What our students say about the Southern Cross Model



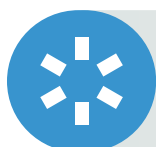
“Six-week terms are just the right length.”



“I love the flexible delivery of content. It suits my lifestyle.”



“I’m more engaged with the content.”



“I get lots of support and the tutors really want you to succeed.”



“I feel like I can focus more. I’m getting better grades.”

“Studying for me looks different every day, so the adaptability of studying online under the Southern Cross Model was ideal. The six-week terms go by quickly and you learn exactly what you need in that time.”

Hollie Robards, Teaching student





Research degrees

Southern Cross University offers Masters by Thesis, Professional Doctorates and Doctor of Philosophy (PhD) awards.

All applications for Higher Degrees by Research are made via the Southern Cross University Graduate School.

For more info, and to apply visit

scu.edu.au/graduateschool



Graduate Certificate in Research Management and Communication

Higher Degree by Research (HDR) candidates have high-level, transferable skills in communication and management. These are attractive to employers across industries and organisations. The Graduate Certificate of Research Management and Communication has been designed to recognise the broad range of higher-level generic skills and graduate attributes that our HDR students acquire during their candidature.

Research Masters and PhD Scholarships

All students choosing to undertake a research program should refer to the Graduate School's Scholarships page or the Southern Cross Plant Science's Scholarship page for full details of available financial support.

In addition to the above scholarship opportunities, Australian Indigenous research students should consider applying through the Indigenous Australian Student Services Scholarship or Indigenous Australian Student Services Book Bursary or Indigenous Australian Student Services Technology Bursary program.

More details and how to apply:

scu.edu.au/scholarships



Indigenous Australian Student Services (IASS)

IASS provides information, advice and support to Aboriginal and Torres Strait Islander students relating to admission, acceptance of offers, enrolment through self-management, fees, examinations and grades, accommodation, tutorial assistance, Abstudy, access to learning resources, counselling and other support services. We have IASS staff located at each campus – Northern Rivers, Coffs Harbour and the Gold Coast.

More details at:

scu.edu.au/iass



Call: 1800 769 763

Email: iass@scu.edu.au



Unleash your inner entrepreneur

Live Ideas provides students opportunities to realise their entrepreneurial capabilities and work directly with industry to build solutions for the challenges of the future.

Learn more:

scu.edu.au/live-ideas



Southern Cross University Health Clinics

On-campus clinics at the Northern Rivers and Gold Coast campuses provide safe and supervised environments for health students to gain clinical experience. Student clinics run throughout the year.

Learn more:

scu.edu.au/health-clinic



Our campuses

We are a multi-campus university on Australia's east coast at the Gold Coast in Queensland and in the Northern Rivers and Coffs Harbour in New South Wales.

The regions we call home all have unique characteristics as study locations – from cosmopolitan cities, thriving industries and coastal lifestyles to living laboratories of great natural beauty and ecological diversity, right next to the campus.

We have branch campuses in Sydney, Melbourne and Perth, and The Hotel School Sydney, Melbourne, Brisbane and Hayman Island in partnership with Mulpha Australia. We also deliver degrees at the Coomera Creative Campus in partnership with TAFE Qld.



Legend

- Main campuses
Gold Coast, Northern Rivers, Coffs Harbour
- Branch campuses
Sydney, Melbourne, Perth
- The Hotel School campuses
Sydney, Melbourne, Brisbane & Hayman Island

Gold Coast campus

Our Gold Coast campus is located at Coolangatta on Yugambeh Country, just 400 metres from North Kirra Beach, and adjacent to the Gold Coast Airport. Many vantage points offer stunning views of the Pacific Ocean.

The campus is spread across three contemporary buildings that house innovative learning spaces, health science laboratories, computer labs, student lounges, the University's Digital Enterprise Lab and an on-campus Health Clinic.



Transport hub



On-campus Health Clinic



Digital Enterprise Lab



Beachside campus



Northern Rivers campus

Our foundation campus is located at Lismore in the heart of the Northern Rivers on Bundjalung Country. Set on acres of lush rainforest that includes a koala hospital, the Northern Rivers campus is a hub for our creative degrees, within easy reach of both national parks and the beautiful beaches of Ballina and Byron Bay.

It is also home to state-of-the-art engineering and environmental science facilities, specialist health labs and simulated hospital wards, a Learning Centre and library complex, heated pool and gym, on-campus accommodation and a Health Clinic.



On-campus
Health Clinic



Pool & Gym



On-campus
accommodation



Surrounded
by nature



Coffs Harbour campus

Our Coffs Harbour campus is located on Gumbaynggirr Country at the heart of an education and innovation hub. Coffs Harbour boasts a relaxed coastal lifestyle but this growing city also hosts international sporting events and regional festivals thanks to outstanding facilities and a major regional airport.

A multi-million-dollar Health Sciences Building on campus features a biomechanics running track and high-tech simulation teaching laboratories. The campus also has a fitness centre, on-campus accommodation, sporting fields and proximity to beautiful beaches and national parks. The University's world-renowned National Marine Science Centre is located in nearby Charlesworth Bay.



Coastal lifestyle



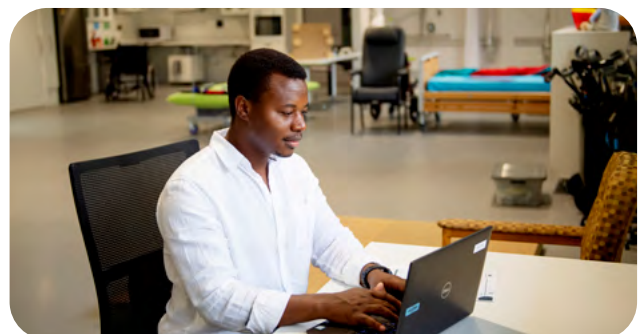
International sports



Health Sciences precinct



On-campus accommodation



Study online

Geography is no longer a barrier to an excellent university education. Online learning in the Southern Cross Model is a dynamic and interactive environment, where you can access multimedia course content and interact with your peers and tutors, getting feedback as you go.

As an online student you have access to all campus facilities including libraries and study spaces as well as campus activities and clubs. It's a quality Southern Cross University education with the convenience of studying where, and when, it suits you best.



Learn anywhere,
anytime



Connected
student community



Access campus
facilities



Great learning
support



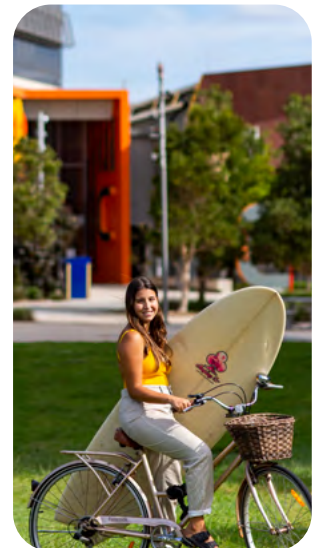
Student life

UniLife

Our UniLife program aims to encourage your academic success and support your wellbeing. Students can get involved in social sports clubs and societies, and University-wide events such as the University Student Awards, snow tour, learn-to-surf camps, beach and water safety programs, and other national competitions.

For details visit:

scu.edu.au/unilife



How to apply

Apply for postgraduate coursework degrees directly to the University through the web page of the course you are interested in. All applications for Higher Degrees by Research (HDR) are made via the Southern Cross University Graduate School.

For postgraduate coursework

scu.edu.au/applytostudy



For Higher Degrees by Research (HDR)

scu.edu.au/graduateschool





Holly's dream is to become a principal

Holly Wedd

Mathematics Teacher, Master of Education graduate

For award-winning mathematics teacher Holly Wedd, pursuing postgraduate study while working opened up numerous opportunities to further her career.

The flexible online format of the Master of Education enabled her to continue teaching five days a week, including launching a thriving mathematics enrichment tutoring program, while working towards her goal of a school leadership role. "My Masters degree focused on student wellbeing and school leadership, and the long-term dream is to become a deputy principal or a principal," she said.

Published by Southern Cross University July 2024. The information in this brochure was accurate at the time it was published and is to be used as a guide only. Southern Cross University reserves the right to alter, amend or delete details of course offerings and other information published in the brochure at any stage. To the extent permitted at law, the University excludes all liability (including all losses, damages, costs and expenses of whatever nature) arising from the use of, or reliance on, any of the information contained in this brochure. Information in this brochure refers to Australian domestic students only. International students should refer to the University website.

Key to professional bodies:

AASW Australian Association of Social Workers

ACECQA Australian Children's Education and Care Quality Authority

ACS Australian Computer Society

AIPM Australian Institute of Project Management

ANPA Australian Naturopathic Practitioners Association

ANTA Australian Natural Therapists Association

AOAC Australian Osteopathic Accreditation Council

APAC Australian Psychology Accreditation Council

ATMS Australian Traditional Medicine Society

CMA Complementary Medicines Australia

CPA Australia

CA ANZ Chartered Accountants Australia and New Zealand

EA Engineers Australia

NESA NSW Education Standards Authority

NMBA Nursing and Midwifery Board of Australia

Please note some courses may be at a pending stage in their accreditation. Check the web page for up-to-date information.


All course enquires

Talk to us about courses, ask a question about your individual situation or find out more about studying at Southern Cross University.

1800 626 481


futurestudent@scu.edu.au

scu.edu.au/futurestudents

 [scu_australia](https://twitter.com/scu_australia)

 [southerncrossuniversity](https://www.facebook.com/southerncrossuniversity)

 [southerncrossuni](https://www.instagram.com/southerncrossuni)

 [uniscu](https://www.youtube.com/uniscu)

 [southerncrossuniversity](https://www.tiktok.com/southerncrossuniversity)

 [southerncrossuniversity](https://www.soundcloud.com/southerncrossuniversity)

For details visit:

scu.edu.au/postgraduate

