



**Southern  
Cross  
University**  
Australia

# Study Abroad guide

2025

Live, study, explore →

# Southern Cross University

Southern Cross University is a world-ranked university on Australia's east coast with main campuses at the Gold Coast in Queensland and at Lismore in the Northern Rivers and Coffs Harbour in New South Wales. The regions we call home all have unique characteristics as study locations – from cosmopolitan cities, thriving industries and coastal lifestyles to living laboratories of great natural beauty and ecological diversity within easy reach of the campuses. We also have metro campuses in Sydney, Melbourne and Perth which operate in collaboration with EduCo, and our unique partnership with Mulpha Australia – The Hotel School – has campuses in Sydney, Melbourne, Brisbane and at Hayman Island Resort.



3 main campuses  
7 branch campuses



18,000 students



80,000+ graduates



Southern Cross University acknowledges and pays respect to the ancestors, Elders and descendants of the Lands upon which we meet and study. We are mindful that these Lands always were and always will be Aboriginal Land.

# 10 reasons to study at Southern Cross University

1

Outstanding student support

2

Top 100 young university  
Times Higher Education World University rankings

3

Unique campus locations

4

Experiential learning opportunities

5

Join social, sporting and special interest group

6

World class facilities

7

Stay on or near campus in comfortable accommodation

8

Make new friends from around the world

9

Study in six-week terms

10

Combine study and travel

Published by Southern Cross University September 2024. The information in this brochure was accurate at the time it was published and is to be used as a guide only. Southern Cross University reserves the right to alter, amend or delete details of course offerings and other information published in the brochure at any stage. To the extent permitted at law, the University excludes all liability (including all losses, damages, costs and expenses of whatever nature) arising from the use of, or reliance on, any of the Information contained in this brochure. Information in this brochure is for international students wanting to study in Australia.



# Contents

Study in Australia	6
Gold Coast campus	8
Lismore campus	10
Coffs Harbour campus	12
Life at Southern Cross University	14
Campus life	15
Southern Cross Model	16
Cost of living	17
Accommodation	18
Study on the Gold Coast	20
Study in Lismore	22
English pathways	24
What can I study?	26
How to apply	27



Top 100 Young Universities



5 star student support



Top 600 Global Universities



Top 100 for Oceanography

Study a session  
in Australia  
and explore our  
beautiful country...



“It’s great that Southern Cross provides tours  
and surfing lessons for international students.”

**Giona Mendicino**

German student Giona Mendicino spent two  
terms studying IT at the Gold Coast campus.



Watch Giona's  
interview





“Studying Abroad at Southern Cross University in Australia has been such an amazing opportunity! Exploring this beautiful country and the great people I have met along the way is an experience that will be with me forever.”

**Hannah**  
University of Wisconsin Eau Claire (USA)



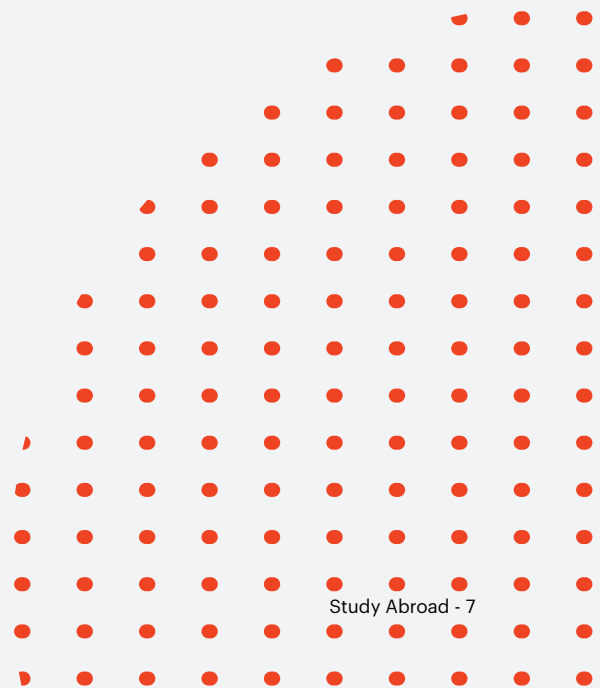
“Before coming to Australia, I felt speaking English was a bit scary. After taking the EAP course, having conversations in English is really fun. In EAP there are many great teachers and friendly students from many countries, so it was a very precious experience and the memory is very important for me.”

**Maoko Watanabe**  
Japan



“I am forever thankful for the opportunity to study abroad on the beautiful Gold Coast, I never imagined it would be the most fulfilling experience of my life. In addition to learning how to surf, I started playing beach volleyball, went to yoga classes, and took hikes that were simply amazing. Suddenly, studying had a new meaning.”

**Denise**  
(Germany)



# Gold Coast campus

Our Gold Coast campus is located at Coolangatta on the lands of the Yugambah Nation, just 400 metres from North Kirra Beach, and adjacent to the Gold Coast Airport. Many vantage points offer stunning views of the Pacific Ocean.

The campus is spread across three contemporary buildings that house innovative learning spaces, health science laboratories, computer labs, student lounges, the University's Digital Enterprise Lab and an on-campus Health Clinic.

Take a virtual tour of our  
Gold Coast campus







Transport  
hub



On-campus  
Health Clinic



Digital Enterprise  
Lab



Beachside  
campus





## Lismore campus

Lismore is the foundation Southern Cross campus, located in the heart of the Northern Rivers on the lands of the Bundjalung Nation. Set on acres of lush rainforest that includes a koala hospital, Lismore is within easy reach of both national parks and the ocean.

The campus is home to state-of-the-art engineering and environmental science facilities, specialist health labs and simulated hospital wards, a Learning Centre and library complex, heated pool and gym, on-campus accommodation and a Health Clinic.

Take a virtual tour of our  
Lismore campus





On-campus  
Health Clinic



Koala  
Hospital



On-campus  
accommodation



Surrounded  
by nature

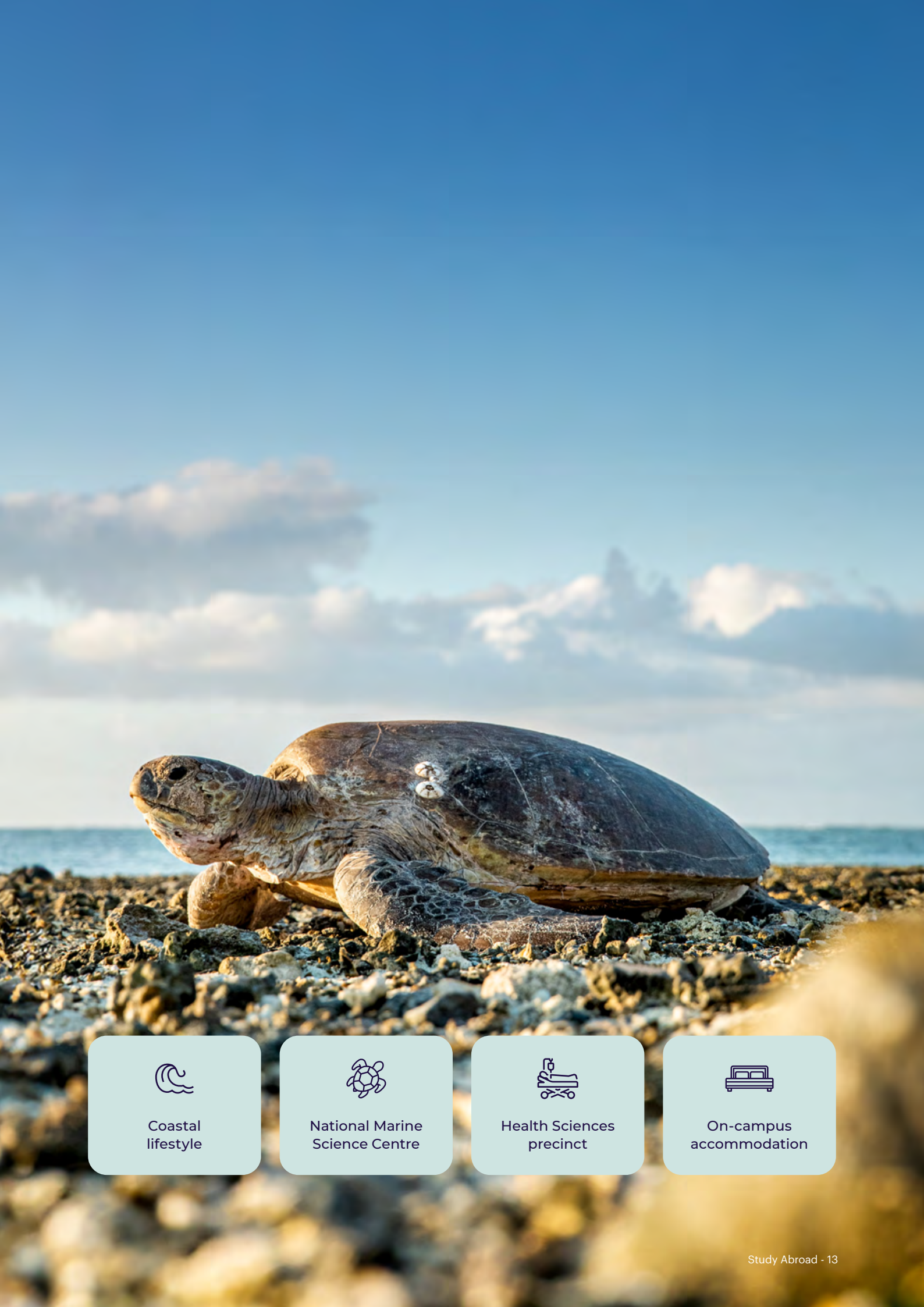
## Coffs Harbour campus

Coffs Harbour campus is located on the lands of the Gumbaynggirr Nation at the heart of an education and innovation hub. Coffs Harbour boasts a relaxed coastal lifestyle, but this growing city also hosts international sporting events and regional festivals thanks to outstanding facilities and a major regional airport.

A multi-million-dollar Health Sciences Building on campus features a biomechanics running track and high-tech simulation teaching laboratories. The campus also has a fitness centre, on-campus accommodation, sporting fields and close proximity to beautiful beaches and national parks. The University's world renowned National Marine Science Centre is located in nearby Charlesworth Bay.

Take a virtual tour of our  
Coffs Harbour campus





Coastal  
lifestyle



National Marine  
Science Centre



Health Sciences  
precinct



On-campus  
accommodation

# Life at Southern Cross

## Southern Cross Global

The team assists students with pre-departure information, settling in, orientation, student visa advice and health insurance advice, wellbeing and welfare.

## Orientation

Orientation week is the first week before studies commence. It is designed to help students settle into their new environment and meet new friends.

## Community engagement

Students can volunteer with local community organisations including the Koala Hospital located on the Southern Cross University Lismore campus, or at local festivals.

## Explore Australia

Part of your study abroad experience includes exploring all Australia has to offer. There are several trips through the year, from camping adventures in the Australian outback to exploring World Heritage rainforests and waterfalls, or surf lessons at our beautiful local beaches.

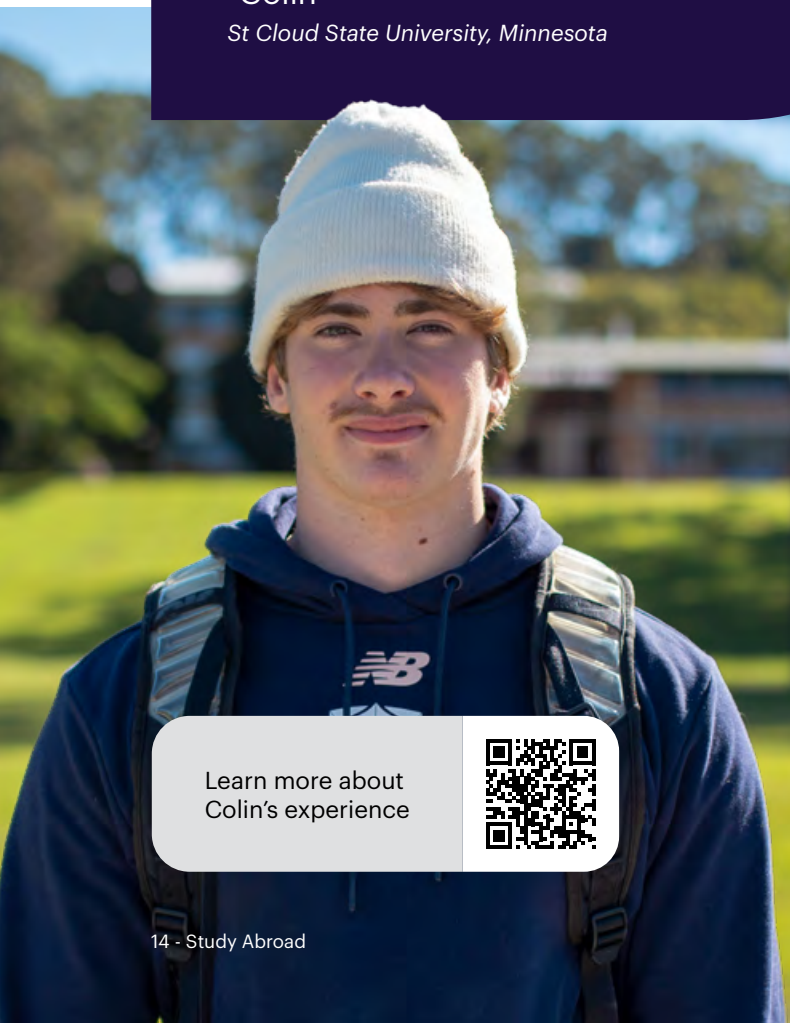
## Ambassadors

Student ambassadors provide a point of contact for new students, having experienced the same challenges of living and studying in a new country. Ambassadors mentor students, organise and participate in events and coordinate volunteering.

“Southern Cross has been amazing. Living on campus gave me the opportunity to meet a lot of friends. It’s definitely a plus to be able to walk to my classes, walk to the gym, walk to the plaza to get some food, everything’s close by. I really like the location of the (Lismore) campus, it’s really open and I just like the environment.”

- Colin

*St Cloud State University, Minnesota*

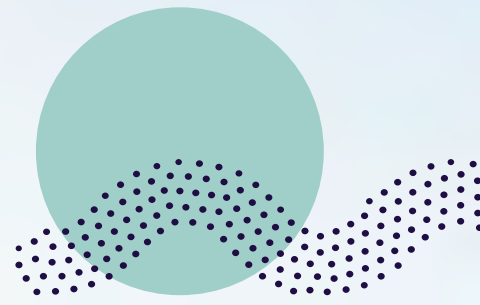


Learn more about  
Colin's experience



# Campus life

Get more out of your experience by joining a club, playing a sport or participating in the many social and cultural activities that make our campuses such great places to study.



# The Southern Cross Model

At Southern Cross University, we're always looking for a better way to do things. That's why all our courses are taught in a unique academic model that's designed to set you up for success at university and beyond.

The Southern Cross Model divides the academic year into six-week terms. You'll study two units (subjects) each Term, for four Terms a year, enabling you to focus deeply on what you are learning.

Content is highly interactive, with engaging face-to-face and active learning formats that have real-world applications. A shorter unit structure gives you a greater sense of momentum and motivation as you achieve milestones quickly.

Use the QR code below to learn more about the Southern Cross Model – a better way to learn.

## Six-week Terms

Terms are six-weeks long with a break between each one. You'll typically study across four Terms a year.

## Increased success

Since the Southern Cross Model was implemented, our students have achieved higher grades than ever before.

## Immersive learning

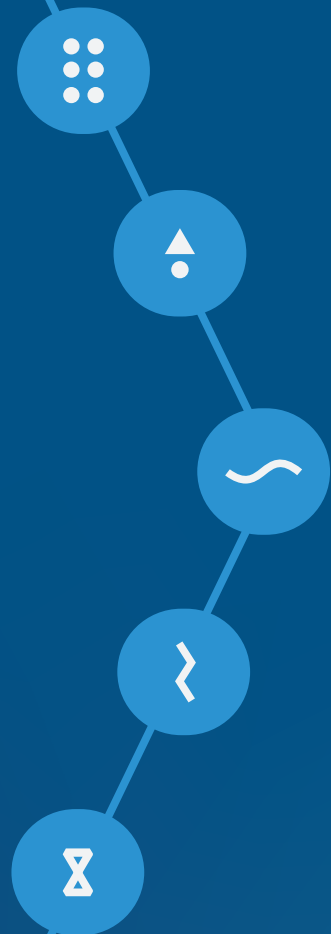
Focus on just two units each Term for an immersive study experience. Learn more, quickly, in workshops and tutorials.

## Greater completion

More students complete their units successfully in the Southern Cross Model. It's a better, and more enjoyable way to learn.

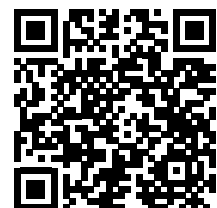
## You're in control

The Southern Cross Model works with you in juggling all your other commitments – family, work, sport, friends. It's university for the 21st century.



“You get to focus really hard, then after that you can relax. That’s the reward at the end of each subject – a two-week break before the next term starts. You can clean your mind and come back with new energy.”

Davi Martins Algranti, Bachelor of Business student.







## Cost of living

Southern Cross University students may benefit from the reduced cost of living compared to Australian capital cities. The table below is a general weekly guide in Australian dollars for a single student living near the Gold Coast or Lismore campuses.

Find out more about  
the cost of living





# Accommodation

At the Northern Rivers and Coffs Harbour, you can enjoy quality on-campus accommodation just minutes from your classes, while the Gold Coast offers a range of private accommodation.

## On-Campus

Lismore and Coffs Harbour offer on-campus accommodation. Gold Coast-based students live off-campus in community (see below for off-campus accommodation options).

Facilities at each college include internet access and on-site laundries, indoor and outdoor entertainment areas and movie facilities. Weekly room rental starts from \$230 (in 2024).

Unilodge at Coffs Harbour provides modern, fully furnished four-bedroom apartments with wireless internet access, laundry facilities, and a recreation lounge for group gatherings and organised social events. Weekly room rental starts from \$230 (in 2024).

For more details, please visit: [scu.edu.au/accommodation](https://scu.edu.au/accommodation)

## Off-Campus

Check out Unistays for a range of off-campus accommodation in the local area: [unistays.scu.edu.au](https://unistays.scu.edu.au)

Local real estate agents also list private rentals.

For homestay options, check out Australian Homestay Network: [homestaynetwork.org](https://homestaynetwork.org)



## Gold Coast campus

# Live, surf and study on the Gold Coast

## Study abroad

### Undergraduate

Duration	4 months
Starts	March, July, August or October
Units	4 Units
2025 tuition fees	\$9,640 (4 units) or \$10,440 with the Surf Lessons

### Undergraduate

Duration	4 months
Starts	March, July, August or October
Units	3 Units
2025 tuition fees	\$7,330 (3 units) or \$8,130 with the Surf Lessons

### Postgraduate

Duration	4 months
Starts	March, July, August or October
Units	3 Units
2025 tuition fees	\$9,694 (3 units)

#### CRICOS 019864G

**Admission requirements:** Qualification equivalent to an Australian Year 12 with the required entry grade; and English language comparable to Academic IELTS 6.0 with no band less than 5.5.

## Subject areas and experiences

### Engineering

Engineers solve real problems and deliver practical and innovative solutions to improve the quality of society.

### Information Technology

A career in IT is a journey into innovation. Be at the cutting edge of tomorrow's technology where you can be a catalyst for change and a creator of solutions.

### Health

The healthcare sector offers a diverse range of satisfying and meaningful careers.

### Education

Education graduates have a lasting and profound impact on the lives of their students, from the early childhood years right through to secondary school.

### Business and Arts

Business and Arts professionals of tomorrow need more than an understanding of core business disciplines. They need cultural awareness, adaptability, curiosity and agility to respond to a changing future.





Learn to surf  
Optional weekly  
surfing lessons

## Lismore Campus

# Explore the Northern Rivers

## Study abroad

### Undergraduate

<b>Duration</b>	4 months
<b>Starts</b>	March or July
<b>Units</b>	4 Units
<b>2025 tuition fees</b>	\$9,640 (4 units) or \$10,440 with the Surf Camp

### Undergraduate

<b>Duration</b>	4 months
<b>Starts</b>	March or July
<b>Units</b>	3 Units
<b>2025 tuition fees</b>	\$7,330 (3 units) or \$8,130 with the Surf Camp

## Subject areas and experiences

### STEM

Nestled between marine parks, agriculture hot spots and World Heritage rainforest, the campus is an ideal base for field studies, complemented by a state-of-the-art engineering precinct.

### Indigenous studies

Learn about the world's oldest living culture through Gribi College of Indigenous Australian Peoples as you explore Indigenous world views and ways of knowing and learning.

### Service opportunities

Immerse yourself in our community with opportunities to volunteer in local activities or work on a group project including the Koala Hospital on our Lismore campus.

### Experiential learning

Outdoor education incorporates leadership training and camping trips exploring the local area, with national parks on the campus doorstep and the ocean close by.

CRICOS 019864G

**Admission requirements:** Qualification equivalent to an Australian Year 12 with the required entry grade; and English language comparable to Academic IELTS 6.0 with no band less than 5.5.





Gain hands-on experience alongside your study by volunteering at the Koala Hospital on campus.

Friends of the Koala is the lead koala conservation group in Australia, and the only organisation in the world that focuses on all aspects of koala conservation. With over 550 members, 239 active volunteers and 9 staff members, they rescue, treat, rehabilitate and release koalas, protect and enhance habitat, initiate and execute koala health research projects, engage and educate the community and advocate on behalf of koalas at a local, state and national level.

Optional  
surf camp

## Academic English pathways

# Learn English in Australia

### English for Academic Purposes (EAP)

<b>Duration</b>	5 to 50 weeks
<b>Starts</b>	See table below
<b>Location</b>	Gold Coast
<b>2025 Tuition fees*</b>	\$460 per week for 15 weeks or less \$420 per week for 16 weeks or more \$260 enrolment fee (non-refundable)
<b>CRICOS</b>	019864G

**Admission requirements:** Students will be assigned to an appropriate English language level based on proficiency scores (e.g. SCU College English Language Test, IELTS) presented on application.

English for Academic Purposes (EAP) prepares students for study at Southern Cross University. EAP builds on existing English language abilities in reading, writing, speaking and listening. It then develops students' academic and digital literacy practices, including: researching, referencing, note taking, using the Southern Cross University Learning Management System and giving presentations. The length of EAP studies will depend on a student's English language level at application. Successful completion of EAP provides direct entry to a range of Southern Cross University degrees. Homestay is strongly recommended for students studying EAP, please scan the QR code for more information for more information.

### General English

<b>Duration</b>	4 to 50 weeks
<b>Starts</b>	Monday of any teaching week
<b>Location</b>	Gold Coast, Lismore
<b>2025 Tuition fees*</b>	\$460 per week for 15 weeks or less \$420 per week for 16 weeks or more \$260 enrolment fee (non-refundable)
<b>CRICOS</b>	019864G

**Admission requirements:** Students will be assigned to an appropriate English language level based on proficiency scores (e.g. SCU College English Language Test, IELTS) presented on application. The student's proficiency is monitored to determine progress.

General English helps students develop their English speaking, listening, reading and writing skills with a focus on communicative English. Students will have the opportunity to develop their language skills as well as strategies for learning and using English in a range of contexts (e.g. work, holidays). Classes may be mixed-level ability. Homestay is strongly recommended for students studying General English, please scan the QR code for more information for more information.

### EAP start dates

Leading into Term	Weeks of English	Start Date	End date
<b>Term 1, 2025</b> Starts: Monday 10 March (O week 3 March 2025)	30	1 July 2024	14 February 2025
	25	5 August 2024	14 February 2025
	20	16 September 2024	14 February 2025
	15*	21 October 2024	14 February 2025
	10	25 November 2024	14 February 2025
	5	13 January 2025	14 February 2025
<b>Term 3, 2025</b> Starts: Monday 7 July (O week 30 June 2025)	50	3 June 2024	13 June 2025
	45	8 July 2024	13 June 2025
	40	19 August 2024	13 June 2025
	35	23 September 2024	13 June 2025
	30	28 October 2024	13 June 2025
	25	2 December 2024	13 June 2025
	20	20 January 2025	13 June 2025
	15*	24 February 2025	13 June 2025
	10	31 March 2025	13 June 2025
	5	12 May 2025	13 June 2025
<b>Term 5, 2025</b> Starts: Monday 27 October (O week 20 October 2025)	50	30 September 2024	10 October 2025
	45	4 November 2024	10 October 2025
	40	9 December 2024	10 October 2025
	35	27 January 2025	10 October 2025
	30	3 March 2025	10 October 2025
	25	7 April 2025	10 October 2025
	20	19 May 2025	10 October 2025
	15*	23 June 2025	10 October 2025
	10	28 July 2025	10 October 2025
	5	8 September 2025	10 October 2025




Scan here to find out more about your Homestay options







What can I study?



# How to apply

## Step 1. Start your application

Apply online at [scu.edu.au/international](https://scu.edu.au/international)



OR

Complete the International Application for Admission form with all supporting documents:

- Original or Certified Copy of academic transcripts, with grading system
- English language test results (e.g., IELTS, TOEFL)
- Academic or employer references (if required)
- Advanced Standing application (if relevant). Advanced standing refers to previous study or work experience which may reduce the duration of your degree. You should apply for advanced standing at the time of application.

## Step 2. Assessment

Successful applications receive an International Offer Package (Offer) including:

- Offer
- Information for Accepting Your Offer
- Offer Acceptance Agreement.

1. Review the Offer to make sure all information is correct and submit extra documents if requested. Once conditions are met, send the signed Offer Acceptance Agreement before the Offer Lapse Date.
2. Pay the 'fee payable on acceptance' amount on the Offer once Genuine Temporary Entrant (GTE) conditions.
3. Once all documents are received and conditions are met, Southern Cross University will issue an electronic Confirmation of Enrolment (eCOE) so you can apply for an Australian visa.

## Arriving in Australia

### Getting to Australia

Make sure you know how to get to the campus before you leave as public transport in regional areas is limited. Remember to fill in the Greeting Service request online.

[scu.edu.au/international/arrive](https://scu.edu.au/international/arrive)

### Accommodation

Review short-term and long-term accommodation options before you leave.

[scu.edu.au/accommodation](https://scu.edu.au/accommodation)

### Orientation

Orientation week is compulsory and full of essential information. Bring your passport as identification.

[scu.edu.au/orientation](https://scu.edu.au/orientation)

## **Southern Cross Global**

### **Gold Coast**

Southern Cross Drive  
Bilinga  
QLD 4225 Australia

### **Northern Rivers**

Military Road  
Lismore  
NSW 2480 Australia

### **Coffs Harbour**

Hogbin Drive  
Coffs Harbour  
NSW 2450 Australia

### **Contact**

[studyabroad@scu.edu.au](mailto:studyabroad@scu.edu.au)  
[scu.edu.au/studyabroad](http://scu.edu.au/studyabroad)  
T: +61 2 6620 3876