

Pathways for
University Success



SCU College 2017



It's all about U

scu.edu.au/scucollege

CRICOS Provider: 01241G



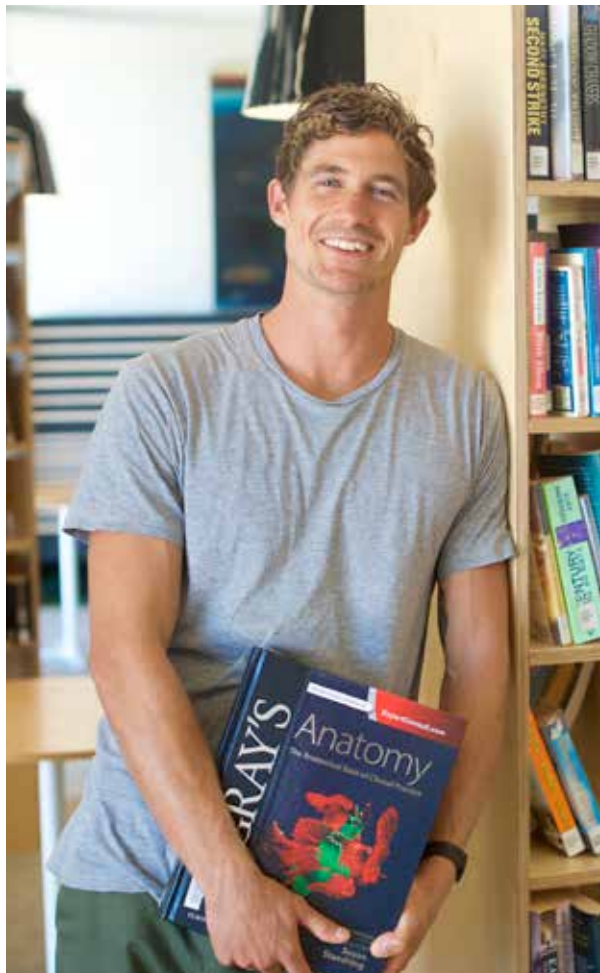
Welcome

Welcome to SCU College. We are proud of the role we play in opening access to university to students from diverse backgrounds, experiences and language groups.

Whether you are a school leaver, a mature aged person, or VET graduate envisioning a career change, we have a range of alternative pathways to help you achieve your goals at your own pace. Many of these pathways will provide credit towards higher qualifications at SCU.

We are proud of our success in providing life-changing opportunities and look forward to witnessing your success in study and beyond.

Professor Janet Taylor
Director, SCU College



After finishing school in Year 10, Dylan Steele plied his trade as a tiler, worked in the mines as a scaffolder and travelled the world.

“I enjoyed having cash flow and being able to buy surfboards and go surfing and do what I wanted to do. But it got to the point where, workwise, it was no longer satisfying. When I travelled through India I discovered yoga and picked that up as a regular practice. That led me to wanting to work with the body as an osteopath.”

Dylan enrolled in the University’s Preparing for Success at SCU Program (PSP) to brush up on the academic skills needed to succeed at university. The Lennox Head local surprised himself, scoring a distinction average.

“Overall PSP was 100 per cent worthwhile. The communications unit was extremely helpful for me – the essay writing and referencing – because I wasn’t too great at English at school. I learned how to manage my time more efficiently. I got familiar with the University’s software programs. The assignments for the science unit were interesting and I enjoyed doing the research.”

Thanks to PSP, Dylan has enrolled in a Bachelor of Clinical Sciences degree and is on his way to becoming an osteopath.

Dylan Steele

Bachelor of Clinical Sciences
Now Bachelor of Clinical Sciences (Osteopathic Studies)
Preparing for Success at SCU Program graduate

SCU College

Your pathway to success

SCU College offers numerous study pathways, from short preparatory programs to one-year Diplomas, two-year Associate degrees, or a three-year full degree. College programs have flexible distance education and part-time alternatives.

What can I study?

Bachelor of Contemporary Studies – a three-year flexible degree which is a qualification in its own right or a pathway to other disciplines.

Diploma (Science) – a one-year course which is a qualification in its own right and a pathway to a linked Bachelor degree accruing up to 8 units of credit.

Associate degrees (Arts, Health, Business and Science) – a two-year course which is a qualification in its own right or a direct path to a linked Bachelor degree accruing up to 16 units of credit (up to 12 units for Health).

Preparing for Success at SCU Program (PSP) – a fee-free 12-week preparatory program for students aged over 18 years with minimal prior qualifications.

Which pathway is best for you?

All study times are given in full-time study years – flexible distance and part-time study options are available in most pathways. Students can exit awards after one year or two years and be credited with Diploma or Associate degree qualifications (except in PSP). Entry criteria apply and final time taken will depend on units studied.

Pathway 1: usually 3 years full-time ¹	
Start here →	Bachelor of Contemporary Studies 3 years
	College Connect support 3 years

Pathway 2: usually 3 – 4 years full-time ¹		
Start here →	Diploma 1 year	Linked Bachelor degree 2 – 3 years
	College Connect support	
3 – 4 years		

Pathway 3: usually 3 – 4 years full-time ¹		
Start here →	Associate degree 2 years	Linked Bachelor degrees 1 – 2 years
	College Connect support	
3 – 4 years		

Pathway 4: usually 3.5 – 4.5 full-time ¹			
Start here →	PSP 12 weeks	Associate degree 2 years	Linked Bachelor degrees 1 – 2 years
		College Connect support	
3.5 – 4.5 years			

Pathway 5: usually 3.5 – 4.5 years full-time ¹		
Start here	PSP 12 weeks	Bachelor degrees
		3.5 – 4.5 years

¹Final time taken will depend on the length of the degree, units studied and starting time.





SCU College

What to expect when studying with SCU College and beyond

Studying at university can be both exciting and challenging. You will encounter new ways of teaching which are different from school, TAFE or work. You will meet new people whether studying on campus or online.

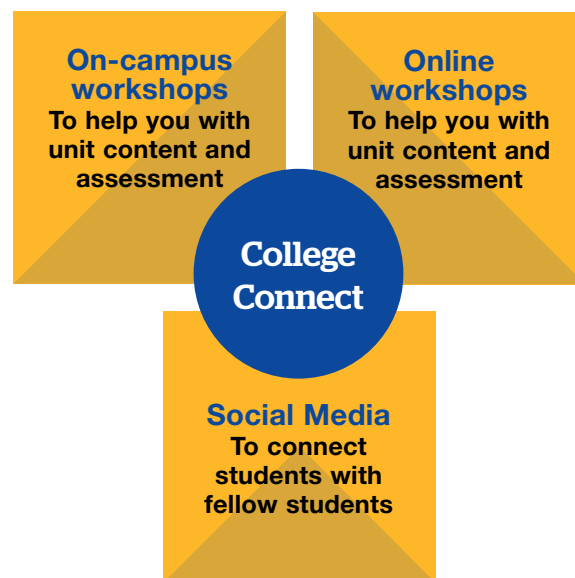
Your workload

A full-time student will normally study four subjects (called units) each session. Part-time and distance education students may undertake only one or two units each session. Each one of those units will involve between 8-10 hours of study each week.

Managing your time is one of the secrets to success at university and the tutors in College programs will guide you through this. The key will be for you to engage in your study from day one and ask for help as soon as a question arises.

College support and asking for help

The College is committed to supporting you above and beyond the assistance you receive in Bachelor level courses. For PSP this help is built in, and for the Diploma, Associate degree and Bachelor degree programs we have a special support strategy called College Connect. Support is offered to both on-campus and online students.



Connecting with this support is your first step towards future success in your studies.

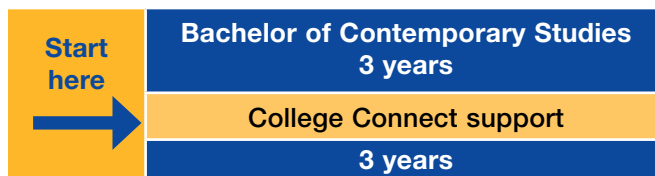


Julia Hillen is finally realising her dream of being an occupational therapist (OT) after being inspired by an OT who helped her mum recover from a serious car accident injury. Julia enrolled in the Associate Degree of Allied Health (now Associate Degree of Health) through SCU College as a pathway into the Bachelor of Occupational Therapy.

"OTs had suggested an Associate degree as a stepping stone into the Bachelor. It was a decade since I'd been at school and I hadn't done essays, exams, referencing or numeracy for a long time. I found SCU College really supportive in offering units that covered off on those topics, as well as giving me lots of other tips which gave me confidence. It was about learning what lecturers and tutors expected.

"The second year of the Associate degree is identical to the first year of the Bachelor, so those units have come off the OT degree and I'm going through with all the friends I've made."

Julia Hillen
Bachelor of Occupational Therapy student



Bachelor of Contemporary Studies

The Bachelor of Contemporary Studies is a three-year full-time (or part-time equivalent) degree which is a qualification in its own right or it can provide a pathway to other disciplines. After the first session students select a study area, choosing from disciplines including arts, science, allied health, engineering, business and tourism.

Students can progress through this award, exit early with a Diploma or Associate degree or seek to transfer to another SCU degree upon achieving the required results.

What will I learn?

In the first session of study, students focus on core learning and language skills necessary for university. They then proceed to units from a chosen undergraduate degree. Students receive additional support in the Bachelor of Contemporary Studies through College Connect.

Who is it for?

This degree is suitable for VET graduates, mature aged students or school leavers who may have achieved lower than anticipated results in Years 11 and 12. English language proficiency is at Year 12 level or equivalent.

Entry criteria include one of the following:

- Completion of senior high school
- Certificate III qualification
- Passed Special Tertiary Admissions Test (STAT)
- Successful completion of Preparing for Success at SCU Program (PSP).

Where can it lead?

Students have three alternative exit points for this degree:

- You can complete the Bachelor of Contemporary Studies and have a generalist university level qualification that will be applicable in a range of contemporary career paths. Graduates may be suited to professional participation

in public and private sectors in the areas of business, tourism, allied health, science, and humanities.

- You can complete a designated discipline stream and be guaranteed entry into a linked professional Bachelor level qualification. For example, if you complete the business or tourism stream you are guaranteed entry into the Bachelor of Business accruing up to 16 units of credit towards that degree.
- You may choose to exit early from the program with either a Diploma or an Associate degree.

Summary

Locations: Lismore, Distance Education

Duration: 3 years full-time or 6 years part-time

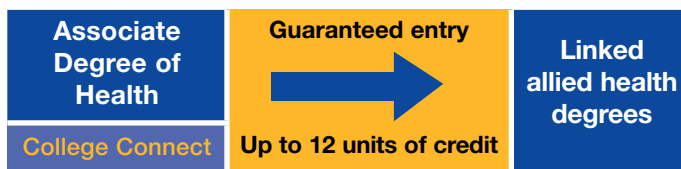
UAC: 330100 **QTAC:** 050011

Total units: 24

Your career

Depending on the areas of study completed in this degree, graduates may be suited to a range of positions in the public and private sectors, including in business (in general business, marketing, management, retail, and tourism); health (in public and private hospitals, medical rehabilitation units, community and home health settings, residential aged care facilities (high and low care), sports and health administration, health promotion and research); science (as field assistants, laboratory assistants, revegetation officers and environmental monitoring officers); and the arts and social sciences (in community relations, cultural policy, management and administration, education, publishing, public service, multimedia design, creative and cultural industries, politics, social justice and human rights).





Associate Degree of Health

The Associate Degree of Health is a two-year full-time (or part-time equivalent) course offered on campus and by distance education. It is a pathway into SCU's Bachelor degrees in biomedical science, occupational therapy, pedorthics, podiatry, psychological science, speech pathology, or sport and exercise science.

After completion of the two-year Associate degree students can proceed into the second year of their Bachelor degree.

What will I learn?

In the first session of study students focus on core learning and language skills necessary for university level learning along with first year core units from their linked degree. They then proceed to units from a linked degree program. Students receive additional support while they are enrolled in the Associate degree through College Connect.

Who is it for?

This Associate degree is a pathway for students who want to work in health and related professions and who do not meet the minimum requirements for entry to those degrees. Students interested in Nursing should use the Preparing for Success Program for entry. English language proficiency is at Year 12 level or equivalent.

Entry criteria include one of the following:

- Completion of senior high school
- Certificate III qualification
- Passed Special Tertiary Admissions Test (STAT)
- Successful completion of Preparing for Success at SCU Program (PSP).

Where can it lead?

Guaranteed entry into linked Bachelor degrees

Graduates of the Associate Degree of Health are guaranteed entry into linked degree programs as follows:

- Bachelor of Biomedical Science
- Bachelor of Occupational Therapy
- Bachelor of Pedorthics
- Bachelor of Podiatry
- Bachelor of Psychological Science
- Bachelor of Speech Pathology
- Bachelor of Sport and Exercise Science.

You may receive up to 12 units credit towards your undergraduate degree (depends on course and units studied).

Summary

Locations:* Gold Coast, Lismore, Distance Education

Duration: 2 years full-time or 4 years part-time

UAC: GC – 335361, L – 335319

QTAC: GC – 055761, L – 059901

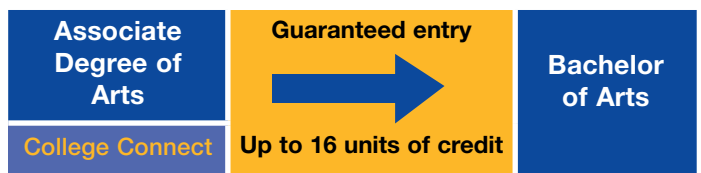
Total units: 16

**Some allied health units may include residential workshops and/or work placements.*

Your career

Graduates may find work in para-professional roles in a range of settings, including in public and private hospitals; medical rehabilitation units; community and home health settings; residential aged care facilities (high and low care); sports and health administration, marketing or promotion; or assisting in biomedical and health research.





Associate Degree of Arts

The Associate Degree of Arts is a two-year full-time (or part-time equivalent) course offered on campus and by distance education. It is a pathway into SCU's Bachelor degree studies in the areas of humanities, arts and creative arts.

After completion of the second year, Associate degree students can proceed into the third year of their Bachelor degree.

What will I learn?

In the first session of study students focus on core learning and language skills necessary for university level learning along with first year core units from their linked degree. They then proceed to units from a linked degree program. Students receive additional support while they are enrolled in the Associate degree through College Connect.

Who is it for?

This Associate degree is a pathway for students who are interested in arts and humanities and who do not meet the minimum requirements for entry to those degrees. English language proficiency is at Year 12 level or equivalent.

Entry criteria include one of the following:

- Completion of senior high school
- Certificate III qualification
- Passed Special Tertiary Admissions Test (STAT)
- Successful completion of Preparing for Success at SCU Program (PSP).

Where can it lead?

Guaranteed entry into linked Bachelor degrees

Graduates of the Associate Degree of Arts are guaranteed entry into the following linked degree program:

- Bachelor of Arts
Other pathways to arts-related courses are possible but may require a portfolio of work.

You may receive up to 16 units of credit towards your undergraduate degree (depends on course and units studied).

Summary

Locations: Gold Coast, Lismore, Distance Education

Duration: 2 years full-time or 4 years part-time

UAC: GC – 333361, L – 333311

QTAC: GC – 053061, L – 053111

Total units: 16

Your career

Graduates may find work in para-professional roles in a range of settings relevant to the arts and social sciences. These include community relations, cultural policy, management and administration, education, publishing, public service, multimedia design, creative and cultural industries, politics, social justice and human rights.

Graduates who proceed to the Bachelor of Arts can build on their critical thinking, creative practice, research and writing skills, with a strong emphasis on community engagement. They will have expanded career opportunities based on majors completed in the degree.





Associate Degree of Business

The Associate Degree of Business is a two-year full-time (or part-time equivalent) course offered on campus and by distance education. It is a pathway into SCU's business, information technology and tourism degrees that may include studies in accounting, finance, human resource management, international business, information systems, marketing and tourism and hospitality.

After completion of the second year, Associate degree students can proceed into the third year of their Bachelor degree.

What will I learn?

In the first session of study students focus on core learning and language skills necessary for university level learning along with first year core units from their linked degree. They then proceed to units from a linked degree program. Students receive additional support while they are enrolled in the Associate degree through College Connect.

Who is it for?

The Associate Degree of Business is a pathway for students who are interested in business, information technology or tourism studies and who do not meet the minimum requirements for entry to those degrees. English language proficiency is at Year 12 level or equivalent.

Entry criteria include one of the following:

- Completion of senior high school
- Certificate III qualification
- Passed Special Tertiary Admissions Test (STAT)
- Successful completion of Preparing for Success at SCU Program (PSP).

Where can it lead?

Guaranteed entry into linked Bachelor degrees

Graduates of the Associate Degree of Business are guaranteed entry into linked degree programs as follows:



- Bachelor of Business
- Bachelor of Business Administration
- Bachelor of Business in Convention and Event Management
- Bachelor of Business in Tourism and Hospitality Management
- Bachelor of Information Technology.

You may receive up to 16 units of credit towards your undergraduate degree (depends on course and units studied).

Summary
Locations: Coffs Harbour, Gold Coast, Lismore, Distance Education
Duration: 2 years full-time or 4 years part-time
UAC: CH – 332351, GC – 332362, L – 332313
QTAC: CH – 052351, GC – 052362, L – 052313
Total units: 16

Your career
Graduates may find work in para-professional roles in a range of settings in the private and public business sectors across a range of industries and in fields such as general business, marketing, management, retail, tourism and other business services. Graduates who proceed to one of the pathway Bachelor degrees will gain further specialised knowledge and skills and be suited to a range of careers within the industry based on their study discipline and areas of focus.



Associate Degree of Science	Guaranteed entry 	Linked environment, science and engineering degrees
College Connect	Up to 16 units of credit	
Diploma of Science	Guaranteed entry 	Linked environment, science and engineering degrees
College Connect	Up to 8 units of credit	

Associate Degree of Science

The Associate Degree of Science is a two-year full-time (or part-time equivalent) course offered on campus and by distance education. It is a pathway into SCU's Bachelor degrees in science, environmental science, marine science, forest science, and civil and mechanical engineering.

After completion of the second year, Associate degree students proceed into the second or third year of their Bachelor degree.

What will I learn?

In the first session of study students focus on core learning and language skills necessary for university level learning along with first year core units from their linked degree. They then proceed to units from a linked degree program. Students receive additional support while they are enrolled in the Associate degree or Diploma through College Connect.

Who is it for?

Both the Associate Degree of Science and the Diploma of Science provide a pathway for students who are interested in either science or engineering studies and who do not meet the minimum requirements for entry to those degrees. English language proficiency is at Year 12 level or equivalent.

Entry criteria include one of the following:

- Completion of senior high school
- Certificate III qualification
- Passed Special Tertiary Admissions Test (STAT)
- Successful completion of Preparing for Success at SCU Program (PSP).

Where can it lead?

Guaranteed entry into linked Bachelor degrees

Graduates of the Associate Degree of Science and the Diploma of Science are guaranteed entry into linked degree programs as follows:

- Bachelor of Science
- Bachelor of Environmental Science
- Bachelor of Engineering (Honours) in Civil Engineering
- Bachelor of Engineering (Honours) in Mechanical Engineering
- Bachelor of Marine Science and Management
- Bachelor of Forest Science and Management.

You may receive up to 8 units (Diploma) and up to 16 units (Associate degree) of credit towards your undergraduate degree (depends on course and units studied).

Summary Associate Degree of Science

Locations: Lismore, Distance Education*

Duration: 2 years full-time or 4 years part-time

UAC: L – 334312 **QTAC:** L – 054311

Total units: 16

**Distance education students attend compulsory residential workshops at the Lismore campus for some units.*

Your career

Graduates may find work in para-professional roles in a range of settings, including positions as field assistants, laboratory assistants, revegetation officers and environmental monitoring officers. Graduates who proceed to one of the pathway Bachelor degrees will have a range of career opportunities available in their chosen fields in government agencies and in the private sector.

Diploma of Science

The Diploma of Science, a one year (full-time or part-time equivalent) course, is also available as a guaranteed entry point to selected SCU degrees. It equips students with foundational knowledge and skills in areas including environmental, health and physical sciences such as engineering. The Diploma is a pathway to the Associate Degree of Science or it can offer up to one year of credit into linked Bachelor degrees. 'What will I learn?' 'Who is it for?' 'Where can it lead?' and 'Your career' are similar to the Associate degree listed above. You may receive up to 8 units (Diploma) of credit towards your undergraduate degree (depends on course and units studied).

Summary Diploma of Science

Locations: Lismore, Distance Education*

Duration: 1 year full-time or 2 years part-time

UAC: L – 334014 **QTAC:** L – 054701

Total units: 8

**Distance education students attend compulsory residential workshops at the Lismore campus for some units.*



Preparing for Success Program (PSP)

The Preparing for Success at SCU Program (PSP) is a 12-week program (or part-time equivalent) which assists students to develop the academic skills needed to succeed at university. The program is fee-free.

PSP can be studied in a variety of flexible ways to assist those juggling other commitments. The course is available at all campuses and by distance education, in all three teaching sessions.

Entry into PSP is by direct application to the University.

What will I learn?

The course comprises four units. Three compulsory units focus on individual and group management skills essential for successful university performance, effective research strategies and written communication, and practical numeracy skills. The fourth unit provides a choice of developing research and writing skills in the arts and business, or the sciences.

It is expected that students will have reasonable computer and information technology literacy, and ongoing access to an internet connection.

Who is it for?

PSP is for an Australian citizen or resident who is 18 years of age or over. It is open to those who may not meet the formal entry requirements for university study and want to study at university. English language proficiency is at Year 10 level or equivalent.

Entry criteria may include the following:

- Completion of secondary study to the equivalent of Year 10 in Australia or similar.
- Completion of a personal competency statement.

Where can it lead?

Guaranteed entry into an SCU course

Students who successfully complete PSP are guaranteed a place in an SCU course.

Summary

Locations: Coffs Harbour, Lismore, Gold Coast, Distance Education

Duration: One session full-time or up to 1 year part-time

Total units: 4

Apply direct to the University

Your career

This program provides an alternative entry pathway into Southern Cross University. The course is useful for school leavers or TAFE students who have taken the vocational strand of learning but would now like to go to university. The course is also valuable for those who have spent time away from the academic environment for family, career or personal reasons and who wish to revise their skills before undertaking a university degree.



Applying to study on campus

For full details go to scu.edu.au/howtoapply

If you are planning to study on campus, either as a full-time or part-time student, you will need to apply online through either the Universities Admission Centre (UAC) or Queensland Tertiary Admissions Centre (QTAC) – either can process your application.

Contact details for **UAC:**

W: www.uac.edu.au

T: 02 9752 0200

Contact details for **QTAC:**

W: www.qtac.edu.au

T: 07 3858 1222

Tip: Applications to begin Session 1 studies via UAC or QTAC generally need to be lodged by the last working day in September of the previous year, as applications after that date will incur a late fee.

Applying to study by distance education Applying to study PSP

If you are planning to study by distance education, or if you wish to study the Preparing for Success at SCU Program (PSP) either on campus or by distance education, you can apply online direct to Southern Cross University at

scu.edu.au/howtoapply

For further information visit:

W: scu.edu.au/scucollege

E: futurestudent@scu.edu.au

Freecall: 1800 626 481

International students

Southern Cross University welcomes international students. This guide however is not intended for their use. International students should contact SCU International.

W: scu.edu.au/international

E: international@scu.edu.au

Freecall: 02 6620 3876

2017 important dates*

Rising Stars Scholarship applications for 2017	Open July 2016 Check website for closing dates scu.edu.au/scholarships
Session 1 teaching dates Orientation	27 February – 26 May 2017 22 – 24 February 2017
UAC and QTAC on time applications for 2017 entry (Session 1)	Open early August 2016 Close late September 2016
Session 2 teaching dates Orientation	10 July – 6 October 2017 5 – 7 July 2017
Session 3 teaching dates Orientation	6 November 2017 – 31 January 2018 1 – 3 November 2017

CAMPUS TOURS AVAILABLE ALL YEAR ROUND

T: 1800 626 481 **E:** campustours@scu.edu.au

*QTAC, UAC, teaching, orientation and scholarship application dates are subject to change. Please refer to their websites. Late QTAC and UAC applications may cost more.

The information in this brochure was correct at the time of publishing (March 2016). All University courses are subject to change by the University and the information provided in this brochure should be used as a guide only. To the extent permitted by law, SCU excludes all liability arising from the use of, or reliance on, the information contained in this brochure.

Copyright Southern Cross University March 2016. SCU5741



T: 1800 626 481

E: futurestudent@scu.edu.au

W: scu.edu.au/scucollege

