

UNDERGRADUATE GUIDE

HEALTH & HUMAN SCIENCES 2017



PEDORTHICS
PODIATRY

SPEECH PATHOLOGY
OCCUPATIONAL THERAPY



Ed McGlynn, student. See story page 4.

It's all about U

scuedu.au/healthscience

CRICOS Provider: 01241G



SCHOOL OF HEALTH & HUMAN SCIENCES

The School of Health and Human Sciences produces capable and creative health practitioners and researchers, prepared for work in Australia's growing health and human sciences sector.

Courses are innovative and industry-relevant, and developed in conjunction with professional organisations to ensure they meet appropriate accreditation requirements.

The School is committed to ensuring students undertake professional experience placements in the industry, as an integral part of their course, to provide them with a practical understanding of their chosen field and the opportunity to gain experience working in clinical teams in multidisciplinary settings.

The University also operates the SCU Health Clinic at the Lismore and Gold Coast campuses, providing health services to students, staff and the general public as well as a facility for students to undertake clinical practice under the supervision of qualified practitioners.

Studying at SCU

Studying at Southern Cross University involves a range of learning experiences. It can vary based on your course of study, your location and your mode of study.

You may take part in face-to-face lectures, workshops and tutorials, video-conferenced lectures, podcasts, online units and discussion forums using cutting-edge technologies. You can bring your own device onto campus and use SCU's extensive wireless network or access study materials off-campus as long as you have an internet connection.

Students in all health degrees have access to world-class facilities featuring specialised labs for tuition, practical hands-on training and research. The mobile laboratory (Sim Truck) and accommodation trailers are also used when necessary, to support students on workplace training in rural or remote areas.

For a short video about the School of Health and Human Sciences, visit: scu.edu.au/healthscience

Why study at SCU?

- ★ Ranked in the top 500 universities in the world.
Times Higher Education World University Rankings 2015-2016
- ★ Outstanding research achievements. Rated 'at world standard' or above in 24 research areas.
Excellence in Research for Australia 2015 (ERA)
visit: scu.edu.au/era
- ★ Rated 'well above world standard' in Nursing; and Complementary and Alternative Medicine. Rated 'above world standard' in Human Movement and Sports Science; and Medical and Health Sciences.
- ★ Degrees accredited with professional and statutory bodies.
- ★ Hands-on experience and technical support in specialist health laboratories and simulated wards.
- ★ Supervised practical placements in clinical settings and professional workplaces.



Degrees which put you in the workplace

Pedorthics students undertake professional placements in various settings throughout the course.

Podiatry students complete professional placements in public hospitals (high risk foot clinics), private practice placements (general, sports and surgical) and rural health locations.

Occupational therapy students gain clinical experience in all four years of the course in settings that may include aged care, hospitals, community health, mental health services, primary schools, industrial environments, private practice and a variety of health, education, and disability centres and services.

Speech pathology students complete professional placements in various settings throughout the four years of study. These settings include but are not limited to the SCU Health Clinic on campus, public hospitals, private practice, community health, rehabilitation centres, aged care facilities, schools, and rural health locations.

Professional experience placements require students to fulfil certain prerequisites prior to attending placement (e.g. a working with children check and National Police Certificate). Prior to applying for a course offered by the School of Health and Human Sciences, please consider the important information regarding these requirements, available at scu.edu.au/healthplacements



BACHELOR OF PEDORTHICS

Pedorthics is about keeping people mobile and getting the best performance from their feet, footwear or orthoses. The Bachelor of Pedorthics provides the knowledge and skills required for graduates to become a professional pedorthist.

Pedorthists work in private practice or allied health practices, and may receive patient referrals from medical professionals.

Pedorthics is a growing industry and Southern Cross University is the first to offer a Bachelor qualification in this area.

Major areas of study

The course develops comprehensive knowledge and associated skills in this new allied health profession. Students are introduced to foot care as a requirement for living independently and being mobile. Studies include learning about health problems associated with feet and footwear design and production.

Professional recognition

The University is undertaking accreditation through the Pedorthic Association of Australia. Once accredited, the degree will enable graduates to practise as professional certified pedorthists, become members of the Association, and appear on the Medical Grade Footwear Register (the Australian register of pedorthists).

Professional placement

During the course, students gain workplace experience to apply their skills and knowledge. They will complete approximately 1 000 hours of professional placement in various settings throughout the three years of study.

For more information, including prerequisites for attending placements, visit: scu.edu.au/healthplacements

Facilities and resources

State-of-the-art facilities include simulation equipment, clinical learning spaces within on-campus clinics, laboratories for anatomy and physiology, movement and biomechanics, and a manufacturing facility equipped with machinery and materials to design and manufacture orthotics and customised corrective footwear, visit: scu.edu.au/healthlabs

Your career

As a pedorthist – a health care professional who specialises in the improvement of human movement, in particular gait and better foot function. A pedorthist conducts a comprehensive assessment that may lead to them manufacturing corrective footwear, orthoses or other supportive devices. Pedorthists work with adults, children, people with disabilities and athletes. They can also use their skills to make comfortable fashion footwear.

Typical career examples include:

Working with adults – addressing associated pain from foot, knee and back issues to improve the quality of life.

Diabetes care – where the correction and management of the feet through footwear and orthoses can prevent limb loss.

Disability health services – where the correct footwear, orthoses and support is vital to ensure the best outcomes and to minimise deterioration of function and improve comfort.

Footwear design and manufacture – for those with an interest in footwear fashion, use your pedorthic know-how to make fashion footwear unique yet comfortable.

Paediatrics – giving toddlers and children assistance with correct footwear and orthoses.

Sporting industry – where the interaction of footwear and orthoses can assist athletes to perform at their best. Many serious and professional athletes have their orthoses and footwear fine-tuned to their needs.

International – studying pedorthics may open employment opportunities overseas as students will be exposed to a range of international contacts.

Summary

Location: Gold Coast

Duration: 3 years full-time or 6 years part-time

UAC code: 335065

QTAC code: 055561

Total units: 24 | **Indicative ATAR:** 68 | **Indicative OP:** 14



Ed McGlynn Bachelor of Podiatry

"I'm a runner so that's what initially got me interested in podiatry and, I've got to say, it's definitely helped improve my running technique.

"The main reason I decided to study podiatry though is my love of helping people – there's nothing better than putting a smile on someone's face.

"Following a career in health science has provided a great opportunity to study human anatomy and physiology and use that knowledge to help people in need and make their lives a bit easier.

"It means I can help people with foot problems to continue participating in their favourite activities and do so as efficiently and safely as possible.

"The best things about studying at Southern Cross University are the fun and friendly atmosphere – I've made so many friends – and the teachers, who are passionate and enthusiastic about what they teach.

"Then of course there's the beach. The views from the podiatry lab are some of the best on the Gold Coast. Plus, you can go for a swim in your lunch break and be back for afternoon classes.

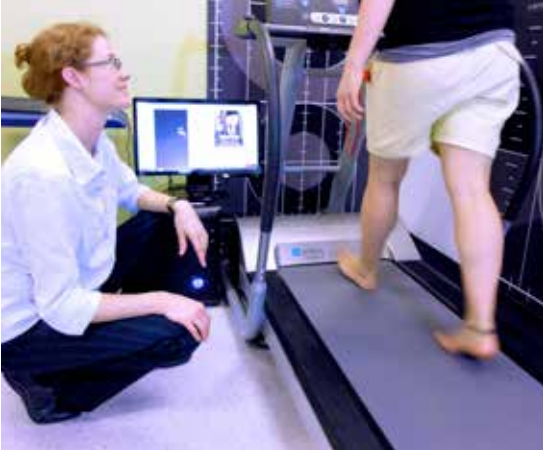
"There's a real focus on hands-on learning and I've already had numerous placements where I had the opportunity to work alongside professional podiatrists.

"These podiatrists are very keen to teach you everything they know and give you a real-life learning experience.

"We're also really lucky to have the on-site SCU Health Clinic where we have the opportunity to treat patients and put what we've learned into practice.

"I'm confident I will graduate from the course as the best podiatrist I can be.

"I hope to use my qualifications to help people here on the Gold Coast and possibly continue my studies to work in podiatric surgery one day."



BACHELOR OF PODIATRY

The Bachelor of Podiatry prepares students for entry into professional podiatry practice. Podiatry is a branch of health care devoted to the study, diagnosis and treatment of disorders of the foot, ankle and lower leg. Within the field of podiatry, practitioners can focus on many different specialty areas, including surgery, sports medicine, biomechanics, geriatrics, paediatrics and primary care.

The degree aims to educate students to become knowledgeable, skilled, empathetic, ethical and innovative professionals who are able to provide effective assessment and intervention for people of different ages, who exhibit health disorders.

Major areas of study

The Bachelor of Podiatry enables students to develop an understanding of the theoretical and practical components of podiatry, with a focus on both general or specialist knowledge and skills. The course shares components with other SCU degrees such as the Bachelor of Occupational Therapy, Bachelor of Clinical Sciences (Osteopathic Studies), Bachelor of Speech Pathology and Bachelor of Sport and Exercise Science.

The course includes an embedded allied health Honours program for eligible students, which can be studied concurrently during the Bachelor degree course.

Professional recognition

The Bachelor of Podiatry is accredited with the Australian and New Zealand Podiatry Accreditation Council (ANZPAC). Graduates can seek national registration as podiatry practitioners with the Podiatry Board of Australia.

Professional placement

Students will complete approximately 1000 hours of professional placement in various settings throughout the four years of study.

ASSOCIATE DEGREE OF HEALTH

Offered by SCU College

The **Associate Degree of Health** is a two-year full-time (or part-time equivalent) entry-level course that provides students with the opportunity to prepare to study for a professional career in health and related professions. Graduates of the Associate Degree of Health are guaranteed entry into the following linked degrees: Bachelor of Biomedical Science, Bachelor of Podiatry, Bachelor of Psychological Science, Bachelor of Occupational Therapy, Bachelor of Speech Pathology and Bachelor of Sport and Exercise Science. Graduates of the Associate degree may receive up to 12 units of credit (advanced standing) towards their Bachelor degree (depending on course and units studied). All Associate degree students are offered extra support while studying.

For more information, visit: scu.edu.au/scucollege

These settings include but are not limited to public hospital rotations (high risk foot clinics), private practice placements (general, sports and surgical) and rural health locations.

For more information, including prerequisites for attending placements, visit: scu.edu.au/healthplacements

Facilities and resources

State-of-the-art facilities include simulation equipment, clinical learning spaces within on-campus clinics, and laboratories for anatomy and physiology, movement and biomechanics, and orthotics and bracing, visit: scu.edu.au/healthlabs

Your career

As a podiatrist, working individually, or as part of a team, in varied settings and with clients of all ages. The majority of podiatry employment is in private practice, but podiatrists also have the opportunity to work in community health settings; in hospitals and with specialised health teams such as in diabetic care; in health promotion and education; with children, athletes and older people; or to undertake research.

Summary

Location: Gold Coast

Duration: 4 years full-time or 8 years part-time

UAC code: 330169

QTAC code: 059961

Total units: 32 | **Indicative ATAR:** 72 | **Indicative OP:** 14



BACHELOR OF OCCUPATIONAL THERAPY

Occupational therapy assists people of all ages to participate in the everyday tasks and activities (occupations) that they need and want to do, whether at home, work, school, or in the community. Occupational therapists transform and adapt environments, activities and equipment, and enhance performance to support and promote meaningful engagement and participation. They may work with individuals, groups, government and non-government organisations, in private practice and in communities.

Occupational therapists' work is diverse. As a graduate of the occupational therapy degree you could assist a person recovering from a stroke to shower and dress independently; you could develop inclusive playground experiences and environments for children of all abilities; you could recommend workplace changes that would assist an injured worker to return to work; or you could design home modifications or public transport changes that would ensure access for a person using a wheelchair.

Major areas of study

In order to meet the Australian Competency Standards for Entry-Level Occupational Therapists, this course is structured in accordance with professional body recommendations. All students complete streams in the following areas:

Professional Areas: occupational therapy theory and practice; occupational therapy assessments and interventions related to biomechanical, sensorimotor, psychosocial and cognitive performance activities; engagement and participation at home, school, work, and in the community; occupational transitions across the lifespan; evaluation of occupational therapy programs; health promotion; and professional experience/fieldwork.

Social Sciences: psychology and sociology for health sciences; Australian health care system; Indigenous studies; research methods; and complementary medicine.

Biological Sciences: anatomy, physiology, kinesiology and neuroscience.

The Bachelor of Occupational Therapy includes an embedded allied health Honours program for eligible students, which can be studied concurrently during the Bachelor degree course.

Professional recognition

The Bachelor of Occupational Therapy has received full accreditation from Occupational Therapy Australia and the

Occupational Therapy Council, and is approved by the World Federation of Occupational Therapists. Graduates of accredited occupational therapy programs are eligible for national registration. Graduates are also eligible for membership of Occupational Therapy Australia.

Professional placement

Students can complete up to 1000 hours of professional placement in various settings throughout the four years of study in settings that may include aged care, hospitals, community health, mental health services, primary schools, industrial environments, private practice and a variety of health, education, and disability centres and services.

For more information, including prerequisites for attending placements, visit: scu.edu.au/healthplacements

Facilities and resources

Students experience a range of teaching approaches including a comprehensive program of community engaged learning, rich and diverse practise-based scenarios, embodied learning, and the development of reflective evidence-based practice. Learning occurs in a variety of teaching environments on and off campus, including the activities of daily living lab for clinical skills and therapeutic techniques, labs for the study of anatomy and physiology, computer labs, as well as small and large group learning spaces, visit: scu.edu.au/healthlabs

Your career

As an occupational therapist in diverse fields that may include aged care, hospitals, community health, mental health services, schools, industrial environments, private practice and a variety of health, education and disability centres and services.

Summary

Location: Gold Coast

Duration: 4 years full-time or 8 years part-time

UAC code: 335168

QTAC code: 055961

Total units: 32 | **Indicative ATAR:** 72 | **Indicative OP:** 12

BACHELOR OF SPEECH PATHOLOGY

The Bachelor of Speech Pathology prepares students for entry into professional speech pathology practice. Speech pathologists assess and treat adults and children exhibiting acquired or congenital disorders of speech, fluency, voice, language and swallowing.

This distinctive course aims to educate students to become knowledgeable, skilled, empathetic, ethical and innovative professionals who are able to provide effective assessment and intervention for people of different ages.

Major areas of study

The Bachelor of Speech Pathology enables students to develop an understanding of the theoretical and practical components of speech pathology, with a focus on both general and specialist knowledge and skills. The course shares components with other SCU degrees such as the Bachelor of Occupational Therapy, Bachelor of Podiatry and the Bachelor of Clinical Sciences (Osteopathic Studies).

Arts and science-based units are included in the course, for example phonetics and linguistics, audiology, and neurology for speech pathology. Embedded throughout the course are principles of evidence-based practice, cultural competency, multi-modal communication and holistic perspectives of functioning.

The course includes an embedded allied health Honours program for eligible students, which can be studied concurrently during the Bachelor of Speech Pathology degree course.

Professional recognition

Southern Cross University is undertaking accreditation from Speech Pathology Australia (SPA), the national professional and accrediting body. Subject to this accreditation, students and graduates of the Bachelor of Speech Pathology will be eligible for membership of Speech Pathology Australia. The accreditation process is expected to be completed mid-2016.

Professional placement

Students can complete up to 1 000 hours of professional placement in various settings throughout the four years of study. These settings include but are not limited to the SCU Health Clinic on campus, public hospitals, private practice, community health, rehabilitation centres, aged care facilities, schools and rural health locations.

For more information, including prerequisites for attending placements, visit: scu.edu.au/healthplacements

Facilities and resources

State-of-the-art laboratories enabling quality learning experiences for anatomy, physiology, neurology and speech pathology, including the speech language lab – a sound-treated facility that enables high quality sound transmission and phonetic transcription of speech sounds. Students access clinical learning spaces within on-campus health clinics and extensive library resources.

It includes computers with state-of-the-art software for students to analyse speech, language, fluency and voice. The video capabilities in the lab provide the opportunity for students to observe qualified clinical speech pathologists in educator roles, other students and themselves working with clients who exhibit a range of communication disorders.

These facilities also enable research opportunities for Honours projects, visit: scu.edu.au/healthlabs

Your career

As a speech pathologist, in diverse settings, including private practice, the corporate sector, schools, community health centres, nursing homes, mental health services, acute and rehabilitation hospitals, and research centres. Speech pathologists work independently and have opportunities to work with other health and education specialists in interdisciplinary teams. They assess and treat adults and children exhibiting acquired and congenital disorders of speech, fluency, voice, language and swallowing.

Summary

Location: Gold Coast

Duration: 4 years full-time or 8 years part-time

UAC code: 330168

QTAC code: 059861

Total units: 32 | **Indicative ATAR:** 79 | **Indicative OP:** 10



Bridgette Hill Bachelor of Speech Pathology student

“We have clinical placements throughout the course. This means that even from our first year we have the opportunity to get experience in the field in hospitals, schools and community settings. We’re really lucky to have the on-site SCU Health Clinic, where we treat members of the community and they can access our services.”

Key dates for 2017 entry

SCU has a teaching calendar of three sessions. Depending on the course of study, this can enable students to spread their study load, or to accelerate and complete their degree in less time than the usual duration indicated on the course pages.

All dates in the table opposite are provisional only and may be subject to change. For the most up-to-date information visit the SCU teaching calendar page at: scu.edu.au/teachingcalendar

UAC and QTAC dates may also be subject to change. For the latest information visit: www.uac.edu.au
www.qtac.edu.au

Also note that late UAC and QTAC applications incur an extra fee.

CAMPUS TOURS AVAILABLE ALL YEAR ROUND T: 1800 626 481 E: campustours@scu.edu.au

Rising Stars Scholarship applications for 2017	Open July 2016 Check website for closing dates scu.edu.au/scholarships
UAC and QTAC on time applications for 2017 entry (Session 1)	Open early August 2016 Close late September 2016
STAR Entry Scheme opens	Early July 2016
STAR Entry Scheme offers	Early December 2016
SCU Info Days	2, 7 and 9 December 2016
UAC and QTAC main round offers <i>For the full list of offer rounds visit the UAC and QTAC websites</i>	Mid January 2017
Session 1 teaching dates	27 February – 26 May 2017
Orientation	22 – 24 February 2017
Session 2 teaching dates	10 July – 6 October 2017
Orientation	5 – 7 July 2017
Session 3 teaching dates	6 November 2017 – 31 January 2018
Orientation	1 – 3 November 2017

5 steps to SCU

1 Choose a course



scu.edu.au/courses

2 Find out more



campustours@scu.edu.au
scu.edu.au/yourfuture
E: futurestudent@scu.edu.au
Freecall: 1800 626 481

3 Apply



To study on campus (full-time or part-time) apply via UAC www.uac.edu.au or QTAC www.qtac.edu.au

4 Accept your offer



scu.edu.au/gettingstarted

5 Enrol in units



scu.edu.au/enrol

International students

Southern Cross University welcomes international students. This guide however is not intended for their use. International students should contact SCU International.

W: scu.edu.au/international

E: intoff@scu.edu.au

T: 02 6620 3876



School of Health & Human Sciences

The information in this brochure was correct at the time of publishing (April 2016). All University courses are subject to change by the University and the information provided in this brochure should be used as a guide only. To the extent permitted by law, SCU excludes all liability arising from the use of, or reliance on, the information contained in this brochure.